

The W. Craig Arrington Memorial Scholarship

Beavertail Lighthouse Museum Association (BLMA) was formed in 1989, for several purposes: to establish a commitment to the preservation and protection of beavertail lighthouse and its site, as well as the environment in general; to promote education by providing a resource for the history of a working lighthouse which has played an important part in Rhode Island's history for more than 253 years. To deepen our commitment to education, a scholarship was founded several years ago. In January 2000, with the death of W. Craig Arrington, BLMA lost an enthusiastic and hardworking member. W. Craig Arrington had served for a long time as our treasurer and was active in the founding of the scholarship fund, which was subsequently named for him.

This year's awardees have been chosen by the same meticulous standards as their predecessors, all of whom have proven very worthy.

Thanks to the Scholarship committee, Don Barrows, Agnes Filkins and Linda Jacobson for a job well done.



BLMA
President,
Linda Warner,
congratulates
Kathleen Almeida,
winner of a
\$1000.00 W.
Craig
Arrington
Scholarship
Award.



Kathleen Almeida, receives a \$1000.00
Scholarship Award from BLMA President,
Linda Warner and Agnes Filkins,
Scholarship committee judge and Board

Board Notes

The Annual Meeting of Beavertail Lighthouse Museum Association was held on September 18 at the Jamestown Library with Don Bingham from the American Lighthouse Society, as our guest speaker. He spoke on the work that is being done on lighthouses by the Society, and in particular he updated us on the progress of Dutch Island Lighthouse, a neighboring light off the west coast of Jamestown.

We were pleased to welcome three newly elected board members – Joe Bouchard, Patricia Lucas and Emily Wild who were duly elected at the annual meeting.

BLMA was the recipient of a very generous donation from the Jamestown Chamber of Commerce. The funds were raised during the popular "Night at the Light" sponsored by the Chamber. Other proceeds raised during the event will underwrite the cost of replacing the garage doors at the caretaker's cottage

The Museum hosted a book signing on July 5th. Lenore Skomal, author of "The Keeper of Lime Rock" signed copies of her book about Ida Lewis and they are available in our gift shop.

In August, members of the Amateur Radio Lighthouse Society were at the Lighthouse to broadcast to other lighthouses throughout the USA and abroad. Docent and BLMA members Alan Bestwick took care of the arrangements and the ham operators communicated in both voice and Morse Code transmissions.

Our statistician, Laura Brasil submitted another of her accurate transcripts from our Guest Log, showing that 17,501 guests visited Beavertail Lighthouse and the Museum. 1798 Rhode Islanders took the ride to the point; 817 Massachusetts and 805 Connecticut neighbors topped the list, but there were visitors from all but two of the United States. Canada with 180 and Germany with 35 represented the highest number of the 33 countries from around the world. We were delighted to be on their itineraries and than Laura for a job well done.

We extend our thanks to all of the docents who took time out of their busy schedules to assist with keeping the Museum open throughout the summer – and note that without them, we could not accomplish this task at all. They are our life's blood and we certainly do appreciate their efforts, as well as the efforts of those who volunteered in so many other ways. Volunteers are the heart and soul of our organization!

Though our docents are off duty for the winter, our volunteer clean up crews have buttoned up the Museum 'til spring, the beacon light will continue to flash every 6 seconds; sounding her intermittent whistle when the storms and fog gather; ever faithful to her duty as the guiding light to those who go down to the sea.

Thanks for a wonderful season!!

A message from our President:

Hello Everyone!

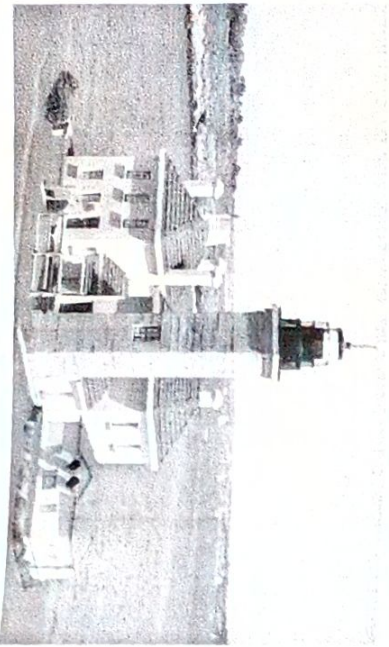
What a great year this has been! Our museum closed on Columbus Day, after a very busy season. Our docents welcomed over 17500 visitors this year, about 3000 more than last year.

On behalf of our Board of Directors and all of our members, I extend heartfelt thanks to all of our docents and those who volunteered in many other ways, and would particularly like to thank Jill Meyer for her outstanding work as our volunteer Docent Coordinator. She did a tremendous job of keeping the museum staffed at all times. Special thanks are due to Sue Warszawski as well who is retiring as our gift shop coordinator and has done an outstanding job for many years. We welcome Jim Filkins who has agreed to assume the coordinator's duties.

The beautiful scene pictured below, is actually not a scene at all, but rather a model of Beavertail Lighthouse that is built to scale and took two years to complete. It is the 'Light' presented to BLMA at a fund raiser for our benefit, at the Museum, sponsored by the Jamestown Chamber of Commerce. The artisan and donor is Varoujan Karantz of Jamestown and we are all excited and most appreciative of this wonderful gift.

See you next year at the Light.

Linda



Seasons Greetings to our valued members:

George & Linda Warner
13 Shady Lane
Jamestown, RI 02835

Don't forget to visit our table at the Conanicut Island Associations Craft Fair at the Melrose Avenue Mall on Saturday - December 7, 2002. We'll have a wonderful assortment of our gift shop items for your holiday shopping pleasure. There's nothing like a home town gift ->

And on Sunday, December 8, 2002 - drop by the Museum and take a step back to a time when life was savored at a slower pace. We will be decorated in the colonial simplicity of days long gone by, and will be serving hot mulled cider, hot coffee and an assortment of home baked goodies to tempt you. We will also be holding a free drawing of some of our gift shop items. Come on by - we'll be there from 1:00 - 3:00 p.m., so take a ride to one of the most beautiful spots on earth and stop in for a visit. We'll be looking for you!



The Lighthouse Log

Beavertail Lighthouse
Jamestown, Rhode Island

Fall/Winter - 2002
A publication of the
Beavertail Lighthouse Museum Association
PO Box 83,
Jamestown RI 02835

FALL/WINTER 2002